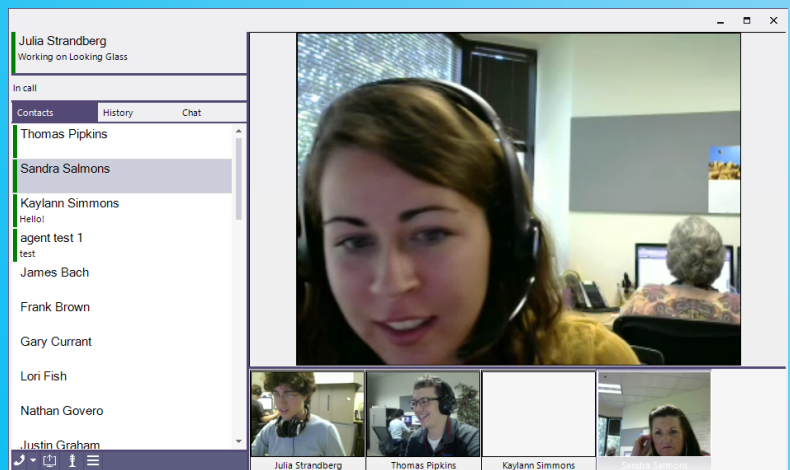


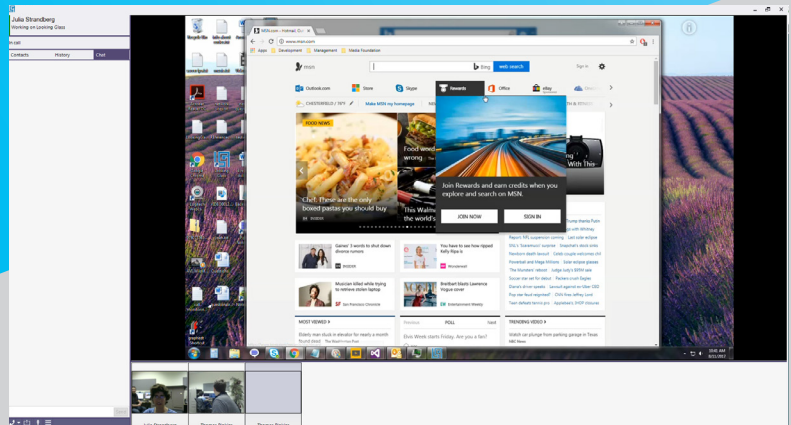
# INTELLIVIEW™ MENTORING AND COLLABORATION

A powerful monitoring, mentoring and collaboration tool embedded right inside your workforce management suite. It's at the heart of Pipkins' new **WORKFORCE NETWORK™**. Say hello to INTELLIVIEW!

*Ideal for managing remote team members and at-home workers.*



^ Multi-station video conference in progress.



^ Screen-sharing as team members collaborate.



## Screen Sharing for Mentoring & Collaboration

Work together just like you are sitting side by side no matter where you are.



## Multi-Station Video Conferencing

Initiate a meeting as soon as you see all team members are available in their daily schedules. No need to send invites.



## Instant Messaging

Forget about standalone IM apps. Workers and supervisors can send messages to each other for quick communication.



## Monitoring

Monitor workers in real time to ensure that they are performing at expected levels.



## Recording future functionality

Use recordings to document performance and for mentoring your team members.



## Video Interviewing

Enhance your recruiting efforts through the use of video interviews.